



MARIANO MARCOS STATE UNIVERSITY

Bids and Awards Committee

INVITATION TO MAKE AN OFFER: Negotiated Procurement

2022-030-1

THE PROJECT: Refurbishment of Faculty Lounge and Guidance Counselor Office
Project Location – MMSU CAFSD, City of Batac
Number of Working Days: 45 calendar days
ABC: P199,593.52

1. The Mariano Marcos State University (MMSU), with offices at Quiling Sur, City of Batac, Ilocos Norte, invites the public to make an offer to furnish all labor, materials, tools and equipment necessary and proper for the implementation of the above Project as per approved designs, plans and drawings.
2. This process is in accordance with Section 53 of R.A. 9184, the Government Procurement reform Act and Section 53.9 of the Implementing Rules and Regulations where interested and qualified contractors are to submit proposals.
4. The offer must be in writing submitted at the address below not later than **5 days** together with the following documents:
 - a) The amount of the offer in writing duly signed by the person making the offer, indicated in numbers and figures.
 - b) The particulars of the offer as to labor, materials, tools, equipment and other work details.
 - c) Documents in support of the legal, technical and financial capability of the person making the offer, which documents shall be confirmed and verified (**3 copies**).
5. It is understood that any offer may be accepted or rejected, or the process invalidated, at any time prior to contract award, without liability to anyone.
6. Documents for this procurement may be secured from the MMSU BAC Secretariat at the address below or downloaded from the MMSU website or from the Philippine Government Electronic Procurement System (PhilGEPS) website.
7. For questions and inquiries, please write or email the University President, thru the BAC Chair, at the address indicated below.

Mariano Marcos State University
Quiling Sur, City of Batac
www.mmsu.edu.ph

November 22, 2022


NATHANIEL R. ALIBUYOG
BAC CHAIR

Received: _____

Received: _____

Received: _____

PROJECT INFORMATION DOCUMENT

Project Title : Refurbishment of Faculty Lounge and Guidance Counselor Office
Project Location : MMSU CAFSD, City of Batac, Ilocos Norte

GENERAL INSTRUCTIONS

The project calls for the furnishing of all materials, labor, tools and equipment needed for the refurbishment of faculty lounge and guidance counselor office. The said project shall be done in strict conformity with the designs, plans, drawings and other details, as well as the specifications, this Project Information Document and other related contract documents prepared and approved for this project. It is highly recommended that the contractor conduct site inspection for them to have an idea on the existing condition of the site.

It also calls for the employment of manpower with the appropriate skills and expertise to undertake the specific items of work and to enable the contractor to produce and deliver to the satisfaction of the owner the needed services and output required of this undertaking. The contractor shall provide competent project-in-charge (architect/civil engineer) and shall have adequate and readily available construction equipment to be utilized during the construction activities.

The contractor shall ensure that the construction activities must not interfere, obstruct and disturb any on-going operation of the building and other facilities; hence, the contractor shall isolate the working area from the other portions of the building. In addition, the contractor shall be required to provide its own water and power supply system needed in the proper execution of the various works for the duration of the contract.

I. DEMOLITION WORKS – This works includes the removal of existing ceiling system and drywall. It is strictly advised that no demolition works shall be done without the presence of Project-in-Charge from PPDO or any representative from the Supply Office of MMSU. The Contractor shall handle with utmost care to avoid damages and malfunctioning for salvaged material.

II. CEILING WORKS – This scope of work includes the installation of 4.5mm thick fiber cement board in a metal frame system as indicated in the approved plans of the project. The Contractor must submit samples of each needed materials as to specifications to PPDO Project-in-Charge for approval before purchase and fabrication.

III. DRYWALL PARTITION WORKS – This scope of work includes the installation of 4.5mm thick fiber cement board in an existing wall wood frame as indicated in the approved plans of the project. The Contractor must submit samples of each needed materials as to specifications to PPDO Project-in-Charge for approval before purchase and fabrication.

IV. PAINTING WORKS. This scope of works includes painting of all ceiling boards and other surfaces with four (4) coats of paints following the approved brand and quality of painting materials specified in the Program of Work and other related contract documents.

V. COUNTER WORKS - This scope of works includes fabrication and installation of cabinet, counter top sink with materials as indicated in the approved plans of the project. The Contractor shall strictly conform to the plans and specifications of the project. Contractor shall submit samples of each material included in the specifications for the approval of the end-user.

VI. PLUMBING WORKS This item shall consist of furnishing and installation of all materials and fixtures as shown in the plans and providing of all required tools and equipment for the satisfactory operation of the entire plumbing and sanitary system all of which shall be in accordance with the latest edition of the National Plumbing Code and specifications.

A. MATERIAL REQUIREMENTS

PROJECT INFORMATION DOCUMENT

Project Title : Refurbishment of Faculty Lounge and Guidance Counselor Office
Project Location : MMSU CAFSD, City of Batac, Ilocos Norte

All piping materials, fixtures and appliances fitting accessories whether specifically mentioned or not but necessary to complete this item shall be furnished and installed. Pipes shall be of quality made by reputable manufacturers free from defects, and shall be true, smooth and cylindrical. Pipes and fittings for Sanitary lines shall be unplasticized Polyvinyl Chloride Series 1000. Pipes and fittings for Water lines shall be Blue Pipe.

B. PLUMBING INSTALLATION

Soil Pipe- All soil and drainage pipe shall be sloped at 2% or 2cm per 1.0 meter run but in no case flatter than 1%. All changes in pipe sizes such as soil and waste lines shall be made with reducing fittings or recessed reducers. All changes in direction shall be made by appropriate use of 45 degrees fittings for soil and waste lines. All pipes shall be cut accurately to measurements and shall be worked into place without springing or forcing. All joints shall be neatly applied with marine epoxy to avoid leakage in sewer line pipes. Upon completion, thoroughly clean all fixtures and accessories to leave the work in a polished condition. The whole system, including all installed fixtures shall be tested for leaks and proper functioning.

Supplementary Provisions

All other items or scope of works not mentioned in this document but show/or indicated in the plans, drawings and specifications, except where it is specifically mentioned as “to be provided by others” the contractor shall likewise furnish all materials, labor and equipment necessary to complete the work.

In case of conflicts that will arise among the specifications and quality of materials, installation procedure and in the plans and drawings as well as in the other contract documents before and during the implementation stage, the same should be referred to the end-user and PPDO Project-in-Charge in proper resolution of the said conflicts.

After all the works have been completed, the surrounding immediate areas affected in the execution of the project shall be cleaned and cleared of all excess materials and debris, temporary structures, facilities and utilities used during the construction period.

A. Time is a very important factor in the implementation of this project and as such, all works indicated in the plans, specifications and in this document shall be fully completed within **45 calendar days** from receipt of the Notice to Proceed.

B. Before final acceptance by the end-user, the Contractor shall post a warranty security in accordance with the following schedule as prescribe in Section 62.2.3.3 of RA 9184 to cover warranty against structural defects to cover the following periods as follows in accordance with Section 62.2.3.2

- a. Permanent Structures (15 years)
- b. Semi-Permanent Structures (5 years)
- c. Other Structures (2 years)

PROJECT INFORMATION DOCUMENT

Project Title : Refurbishment of Faculty Lounge and Guidance Counselor Office
Project Location : MMSU CAFSD, City of Batac, Ilocos Norte


Form of Warranty Security	Amount of Warranty Security (Equal to percentage of the Total Contract Price)
a) Cash or Letter of Credit issued by a Universal or Commercial Bank: Provided, however, that the LC shall be confirmed or authenticated by a Universal or Commercial Bank, if issued by a foreign bank.	Five percent (5%)
b) Bank guarantee confirmed by a Universal or Commercial Bank.	Ten percent (10%)
c) Surety bond callable upon demand issue by GSIS or a surety or insurance company duly certified by the Insurance Commission as authorized to issue such security.	Thirty percent (30%)


C. The Approved Budget for the Project to be bid is **One Hundred Ninety Nine Thousand Five Hundred Ninety Three Pesos and 52/100 Only (Php. 199,593.52)**

Prepared by:

JEREMIAH ROGER P. CALUYA
Civil Engineer

FRANZ ELYN T. PAJINAG
Civil Engineer/Master Plumber

Checked by:

AIDA V. CARANG
Chief, Physical Planning Section

Noted by:

ROMEO R. DILIBULAO
Director PPD

Republic of the Philippines
MARIANO MARCOS STATE UNIVERSITY
PHYSICAL PLANNING AND DEVELOPMENT OFFICE
City of Batang, 2906, Ilocos Norte

Refurbishment of Faculty Lounge and Guidance Counselor Office
MMSU CAFSD, City of Batang, Ilocos Norte

SPECIFICATIONS	
Building Part / Material	Specifications
ARCHITECTURAL	
FINISHES	(show sample of material for approval by the end-user)
Ceiling	4.5mm Fiber Cement Board
DRYWALL PARTITION	4.5mm Fiber Cement Board
COUNTER WORKS	(show sample of material for approval by the end-user)
Cabinet	¾" Laminated Marine Plywood
Counter Top	600mm x 600mm Granite Tiles
PAINTING	(show sample of material for approval by the end-user)
Fiber Cement Board Painting	2 Coats Primer, 2 top coats (Color, specifications must be approved by end-user)
PLUMBING WORKS	(show sample of material for approval by the end-user)
Kitchen Sink	Stainless Steel Sink with Faucet and complete accessories
Water Line Pipes and Fittings	Blue pipe (Netex or approved-equal)
Sewer Line Pipes and Fittings	S1000, uPVC, orange (Netex, Emerald, Atlanta or approved-equal)

Republic of the Philippines
MARIANO MARCOS STATE UNIVERSITY
PHYSICAL PLANNING AND DEVELOPMENT OFFICE
City of Batac, 2906, Ilocos Norte

Refurbishment of Faculty Lounge and Guidance Counselor Office
(MMSU CAFSD, City of Batac, Ilocos Norte)

BILL OF QUANTITIES			
Item No.	Description	Quantity	Unit
I	Demolition Works	1.00	lot
II	Ceiling Works	65.41213	sq.m.
III	Drywall Partition	74.74348821	sq.m.
IV	Painting Works	140.1556182	sq.m.
	Drywall Partition Painting	74.74348821	sq.m.
	Ceiling Partition	65.41213	sq.m.
V	Counter Works	1.00	lot
	Tile Works	2.9925	sq.m.
	Formworks	2.394	sq.m.
	Reinforced Concrete Works	0.2394	cu.m.
	Masonry Works	1.80	sq.m.
	Plastering Works	2.70	sq.m.
	Cabinet	10.772	sq.m.
VI	Plumbing Works	1.00	lot
	Plumbing Fixtures and accessories		
	Stainless Kitchen Sink with Faucet and complete accessories	1.00	set
	Waterline Pipes and Fittings		
	1/2" dia. PVC Blue Pipe	1.00	pcs
	1/2" dia. PVC Blue Elbow	4.00	pcs
	1/2" dia. PVC Blue Female Adapter	2.00	pcs
	1/2" dia. PVC Union Patente	1.00	pcs
	1/2" x 1/2", Angle Valve	1.00	pcs
	1/2" x 1/2", Flexible hose	1.00	pcs
	Teflon Tape, 1"	3.00	rolls
	Solvent Cement, 100cc	1.00	can
	Sewer Line		
	Stainless P-Trap 1 1/2" (for lavatory)	1.00	pc
	2" dia. PVC Pipe S1000	1.00	pc
	2" dia. PVC Elbow	2.00	pcs

DETAILED ESTIMATES

ITEM NUMBER	1				1.00
DESCRIPTION	Demolition Works			lot	
DESCRIPTION	QUANTITY	UNIT	UNIT PRICE	Total Price	
MATERIALS COST					
	Total Materials Cost		Sub-Total:		-
			Unit Cost:		-
	DESCRIPTION	QUANTITY	DAYS	RATE	Total Price
EQUIPMENT COST					
			Sub-Total:		-
			Unit Cost:		-
	DESCRIPTION	QUANTITY	DAYS	RATE	Total Price
LABOR COST	Construction Foreman		days		-
	Skilled Laborer		days		-
	Unskilled Laborer		days		-
			Sub-Total:		-
			Unit Cost:		-

DIRECT COST: -
UNIT COST: -

Plus Indirect Cost:
OCM -
CP -
VAT -
INDIRECT COST: -
INDIRECT UNIT COST: -

Total Direct and Indirect Cost: -

Republic of the Philippines
MARIANO MARCOS STATE UNIVERSITY
City of Batac, 2906, Ilocos Norte

DETAILED ESTIMATES

ITEM NUMBER II		Ceiling Works			sq.m.	
DESCRIPTION	DESCRIPTION	QUANTITY	UNIT	UNIT PRICE	Total Price	
MATERIALS COST	4.5mm Fiber Cement Board		pcs		-	
	0.6mm x 19mm x 50mm Furring Channel		pcs		-	
	0.8mm x 12mm x 38mm Carrying Channel		pcs		-	
	Suspension Rod Hanger		pcs		-	
	Channel Clip		pcs		-	
	50mm x 50mm Wall Angle		pcs		-	
	5/32 Blind Rivets		pcs		-	
	Metal Screw 1"		pcs		-	
	Sub-Total:					
	Total Materials Cost			Unit Cost:	-	
EQUIPMENT COST	DESCRIPTION	QUANTITY	DAYS	RATE	Total Price	
	Sub-Total:					
				Unit Cost:	-	
LABOR COST	DESCRIPTION	QUANTITY	DAYS	RATE	Total Price	
	Construction Foreman		days		-	
	Skilled Laborer		days		-	
	Unskilled Laborer		days		-	
	Sub-Total:					
				Unit Cost:	-	

DIRECT COST: -
DIRECT UNIT COST:

Plus Indirect Cost:
OCM -
CP -
VAT -
INDIRECT COST: -
INDIRECT UNIT COST: -

Total Direct and Indirect Cost: -

Republic of the Philippines
MARIANO MARCOS STATE UNIVERSITY
City of Batac, 2906, Ilocos Norte

DETAILED ESTIMATES

ITEM NUMBER III		Drywall Partition		sq.m.	
DESCRIPTION	DESCRIPTION	QUANTITY	UNIT	UNIT PRICE	Total Price
MATERIALS COST	4.5mm Fiber Cement Board		pcs		
	1 1/4" Fiber Cement Board Nails				
	Total Materials Cost				
	DESCRIPTION				
EQUIPMENT COST					
	Sub-Total:				
	Unit Cost:				
LABOR COST	Construction Foreman		days		
	Skilled Laborer				
	Unskilled Laborer				
	DESCRIPTION				
	</				

DIRECT COST:
DIRECT UNIT COST:

Plus Indirect Cost:
OCM
CP
VAT
INDIRECT COST:
INDIRECT UNIT COST:

Total Direct and Indirect Cost:

-
-
-
-
-
-

-
-
-
-
-

DETAILED ESTIMATES

ITEM NUMBER IV					sq.m.	
DESCRIPTION	Painting Works	DESCRIPTION	QUANTITY	UNIT	UNIT PRICE	Total Price
MATERIALS COST	Drywall Partition Painting	Concrete Sealer/Primer		gal		
		Patching Compound		gal		
		Semi-Gloss Latex		gal		
		Consumables				
		Ceiling Painting		gal		
	Concrete Sealer/Primer	Patching Compound		gal		
		Semi-Gloss Latex		gal		
		Consumables				
		Sub-Total:				
		Unit Cost:				
EQUIPMENT COST	Total Materials Cost					
	DESCRIPTION		QUANTITY	DAYS	RATE	Total Price
LABOR COST	Construction Foreman	DESCRIPTION	QUANTITY	DAYS	RATE	Total Price
				days		
		Skilled Laborer		days		
		Unskilled Laborer		days		

DIRECT COST: -
UNIT COST: -

Plus Indirect Cost:
OCM -
CP -
VAT -
INDIRECT COST: -
INDIRECT UNIT COST: -

Total Direct and Indirect Cost: -

Republic of the Philippines
MARIANO MARCOS STATE UNIVERSITY
City of Batac, 2906, Ilocos Norte

DETAILED ESTIMATES

ITEM NUMBER		V		lot		
DESCRIPTION	Counter Works	DESCRIPTION	QUANTITY	UNIT	UNIT PRICE	Total Price
COUNTER						
Tile Works				pcs		
600mm x 600mm Granite Tiles				bags		
Tile Adhesive				bags		
Tile Grout						
Formworks						
1/4" Ordinary Plywood				pc		
Assorted Common Wire Nails				kg		
Form Lumber				bd.ft.		
Reinforced Concrete Works						
Portland Cement				bags		
Sand (S-1)				cu.m.		
Gravel 3/4"				cu.m.		
12mm dia. RSB				pcs		
Masonry Works						
4" CHB				pc		
Portland Cement				bags		
Sand (S-1)				cu.m.		
10mm dia. RSB				pcs		
#16 Tie Wire				kgs		
Plastering Works						
Portland Cement				bags		
Sand (S-1)				cu.m.		
Cabinet						
3/4" Laminated Plywood				pcs		
1"x2"x8' Good Lumber				pcs		
2"x3"x8' Good Lumber				pcs		
Concealed Hinges				pcs		
Aluminum Cabinet Door Handle				pcs		
Self Drilling Screws				pcs		
Total Materials Cost					Sub-Total:	-
					Unit Cost:	
DESCRIPTION	QUANTITY	DAYS	RATE	Total Price		
					Sub-Total:	-
					Unit Cost:	
DESCRIPTION	QUANTITY	DAYS	RATE	Total Price		
					Sub-Total:	-
					Unit Cost:	
DESCRIPTION	QUANTITY	DAYS	RATE	Total Price		
Construction Foreman		days		-		
Skilled Laborer		days		-		
Unskilled Laborer		days		-		
					Sub-Total:	-
					Unit Cost:	

DIRECT COST:
UNIT COST:

Plus Indirect Cost:

OCM

CP

VAT

INDIRECT COST:

INDIRECT UNIT COST:

Total Direct and Indirect Cost:

1

Republic of the Philippines
MARIANO MARCOS STATE UNIVERSITY
City of Batac, 2906, Ilocos Norte

DETAILED ESTIMATES

ITEM NUMBER VI		lot				
DESCRIPTION	Plumbing Works	DESCRIPTION	QUANTITY	UNIT	UNIT PRICE	Total Price
MATERIALS COST	Plumbing Fixtures and Accessories	Stainless Kitchen Sink with Faucet and complete accessories		set		
	Water Line Pipes and Fittings	1/2" dia PVC Blue Pipe		pcs		
		1/2" dia PVC Blue Elbow		pcs		
		1/2" dia PVC Blue Female Adapter		pcs		
		1/2" dia PVC Union Patente		pcs		
		1/2" x 1/2" Angle Valve		pcs		
		1/2" x 1/2" Flexible Hose		pcs		
		Teflon Tape 1"		rolls		
		Solvent Cement, 100cc		can		
	Sewer Line Pipes	Stainless P-Trap 1 1/2" (for lavatory)		pcs		
		2" dia PVC Pipe S1000		pcs		
		2" dia PVC Elbow		pcs		
	Total Materials Cost			Sub-Total:		-
				Unit Cost:		
	EQUIPMENT COST	DESCRIPTION	QUANTITY	DAYS	RATE	Total Price
Sub-Total:				-		
Unit Cost:				-		
DESCRIPTION		QUANTITY	DAYS	RATE	Total Price	
LABOR COST	Plumber		days			
	Pipe Fitter		days			
	Unskilled Laborer		days			
	Sub-Total:				-	
	Unit Cost:					

DIRECT COST: -
UNIT COST:

Plus Indirect Cost:

OCM -
CP -
VAT -
INDIRECT COST: -
INDIRECT UNIT COST:

Total Direct and Indirect Cost: -



PHYSICAL PLANNING AND DEVELOPMENT OFFICE

ROOM 202 FEM HALL, MARICANO MARCOS STATE UNIVERSITY
City of Marikina, Marikina City, Metro Manila
Telephone: +63 (77) 792-3181

DRAWN BY: *DAVE CLARK E. PASCUA*
CHECKED AND REVIEWED BY: *DAVE CLARK E. PASCUA*
DRAFTSMAN II

AIDA V. CABANG
CHIEF, PHYSICAL PLANNING

PROJECT TITLE:

REFURBISHMENT OF FACULTY
LOUNGE AND GUIDANCE
COUNSELOR OFFICE

LOCATION: MNSU CAMPUS, CITY OF BATANG, ILOCOS NORTHERN

CONFORM:

SOSIMA R. DEMANDANTE
DEAN, CAPSD

RECOMMENDING APPROVAL
ROMEL R. DEBULLAO
DEAN, CAPSD

APPROVED BY:

SHIRLEY C. ARRIAS
UNIVERSITY PRESIDENT

AS SHOWN

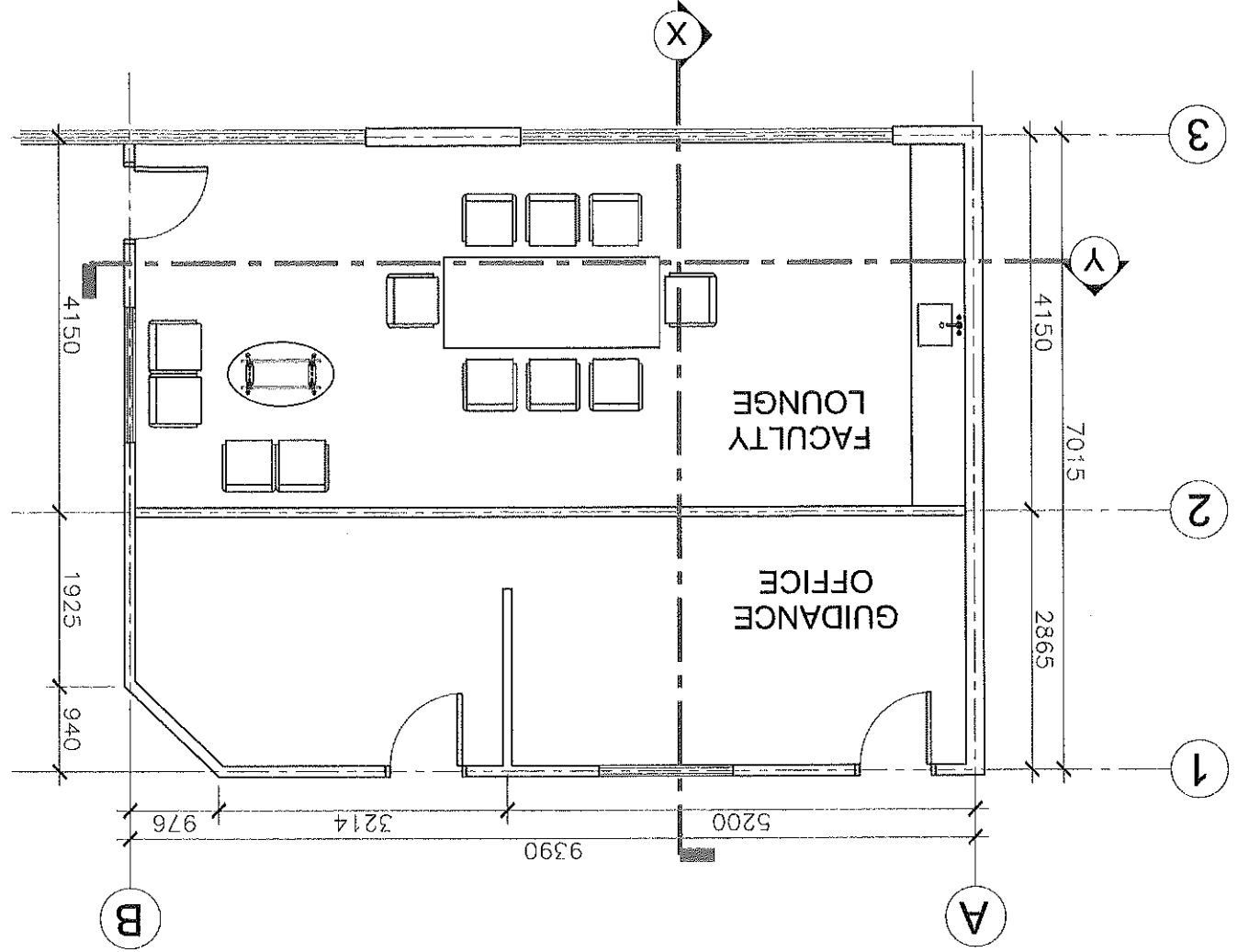
REVISION AND DATE:

A-1
1
4

SHEET NO:

FLOOR PLAN

SCALE 1:75 MTS





PHYSICAL PLANNING AND DEVELOPMENT OFFICE
ROOM 202 FEM HALL, MARIANO MARCOS STATE UNIVERSITY
City of Balaic, 2908 Ilcos Norte
Tel: +63 (77) 792-3191

DRAWN BY: DAVE CLARK E. PASCUA
DRAFTSMAN II
CHECKED AND REVIEWED BY: AIDA V. CABANG
CHIEF, PHYSICAL PLANNING

PROJECT TITLE: REFURBISHMENT OF FACULTY LOUNGE AND GUIDANCE COUNSELOR OFFICE
LOCATION: KMSU CAMPUS, CITY OF BATAVIA, ILOCOS NORTHE

CONFORME: SOSIMA R. DEMANDANTE
DEAN, CAPSD
RECOMMENDING APPROVAL: ROMEO R. DELA LUNA
RECTOR

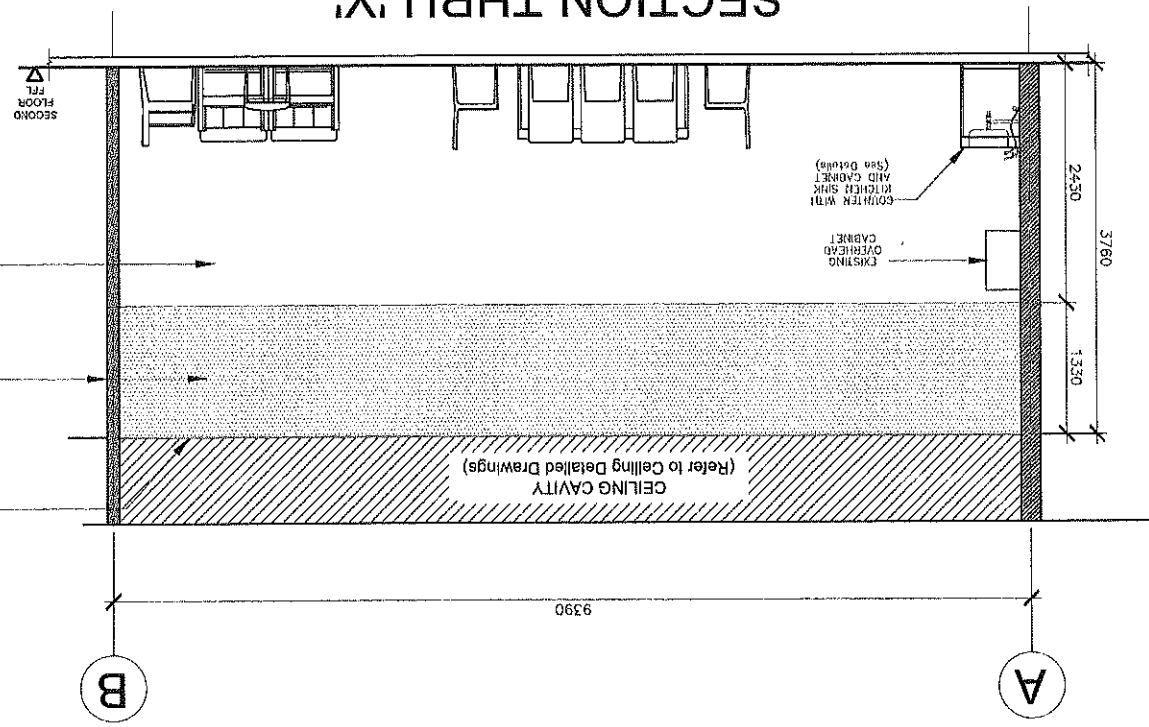
APPROVED BY: SHIRLEY C. AGUIPIS
UNIVERSITY PRESIDENT

AS SHOWN: REVISION AND DATE:

SHEET NO.: A-2
2
4

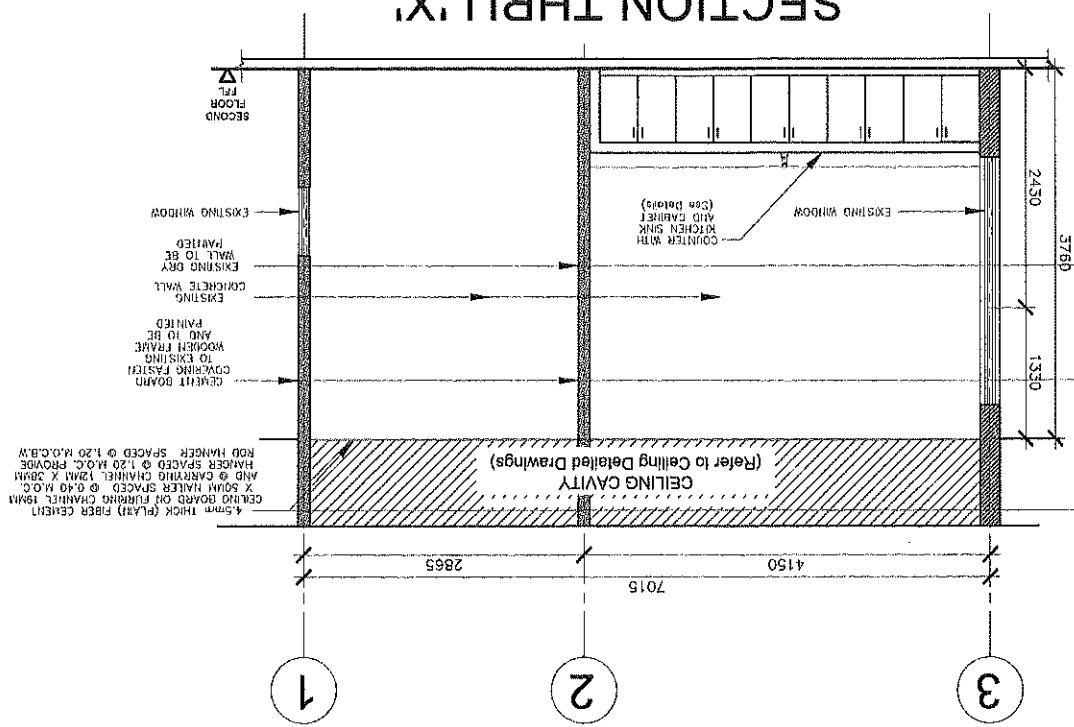
SECTION THRU 'Y'

SCALE 1:75 MTS



SECTION THRU 'X'

SCALE 1:75 MTS



45mm thick (PLATE) FIBER CEMENT
CEILING BOARD OR FIBER CEMENT
X 1200 HALLER SPACED @ 0.40 M.O.C.
AND @ CARRYING CHANNEL 1200 X 30MM
HANGER SPACED @ 1.20 M.O.C. PROVIDE

CEMENT BOARD
TO EXISTING
WOODEN FRAME
AND TO BE
PAINTED
EXISTING
CONCRETE WALL
EXISTING DRY
WALL TO BE
PAINTED
EXISTING WINDOW



PHYSICAL PLANNING AND DEVELOPMENT OFFICE

ROOM 202 FEM HALL, MARIANO MARCOS STATE UNIVERSITY

City of Marikina, 1900 Marikina

Telephone: +63 (77) 792-3191

DAVE CLARK E. PASCUA
DRAFTSMAN II

CHECKED AND REVIEWED BY
AIDA V. CABANES

CHIEF, PHYSICAL PLANNING

REFURBISHMENT OF FACULTY
LOUNGE AND GUIDANCE

COUNSELOR OFFICE

LOCATION: AMSU CAMPUS, CITY OF MARIKINA

SOSIMA R. DEMANDANTE
DEAN, CAMPUS

RECOMMENDING APPROVAL

BOYAN B. BULBULAO
DIRECTOR, PDD

SHARLEY C. ABUJUPIS
UNIVERSITY PRESIDENT

REVISION AND DATE:

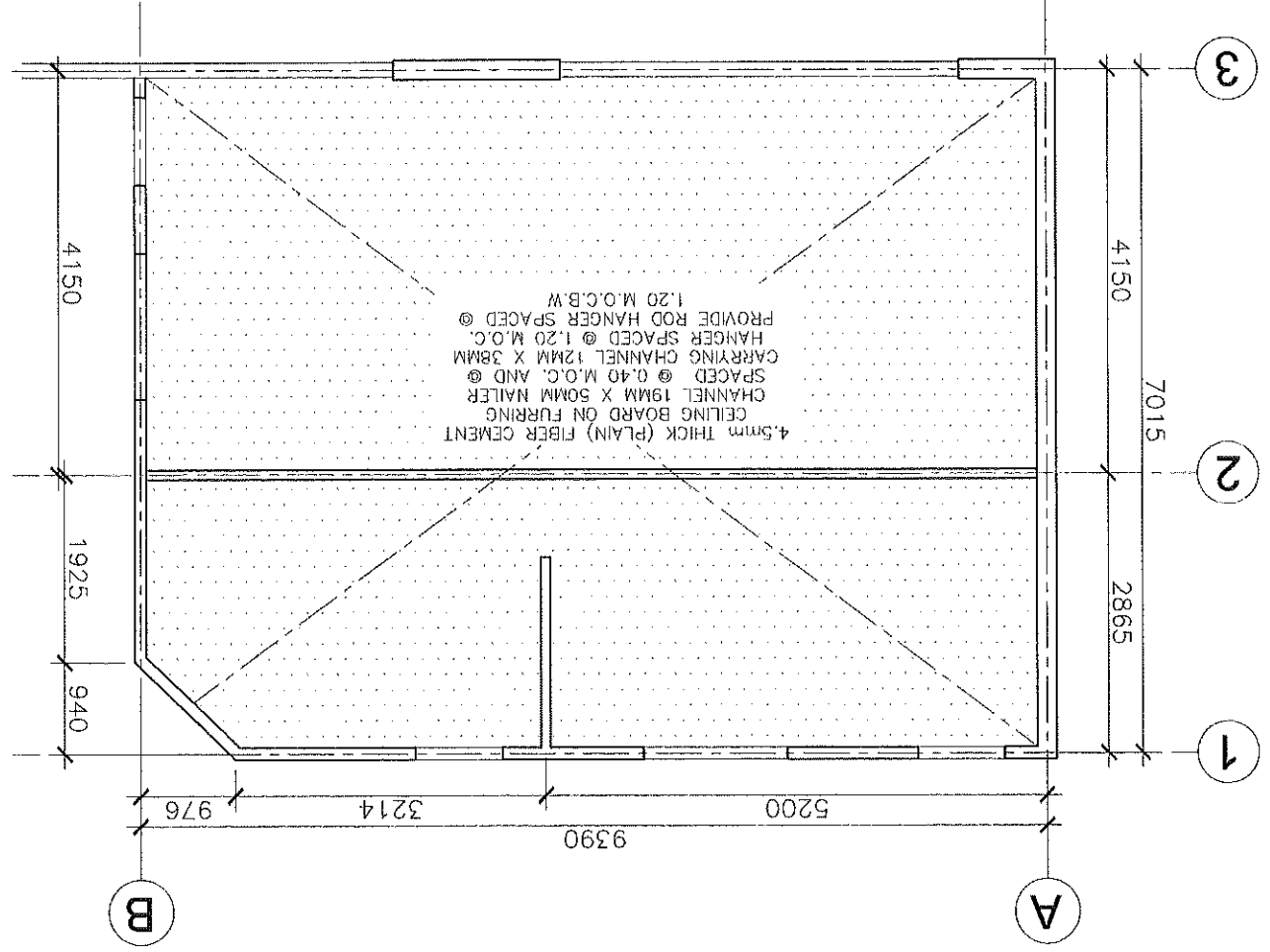
AS SHOWN

SHEET CONTENTS:

SHEET NO:

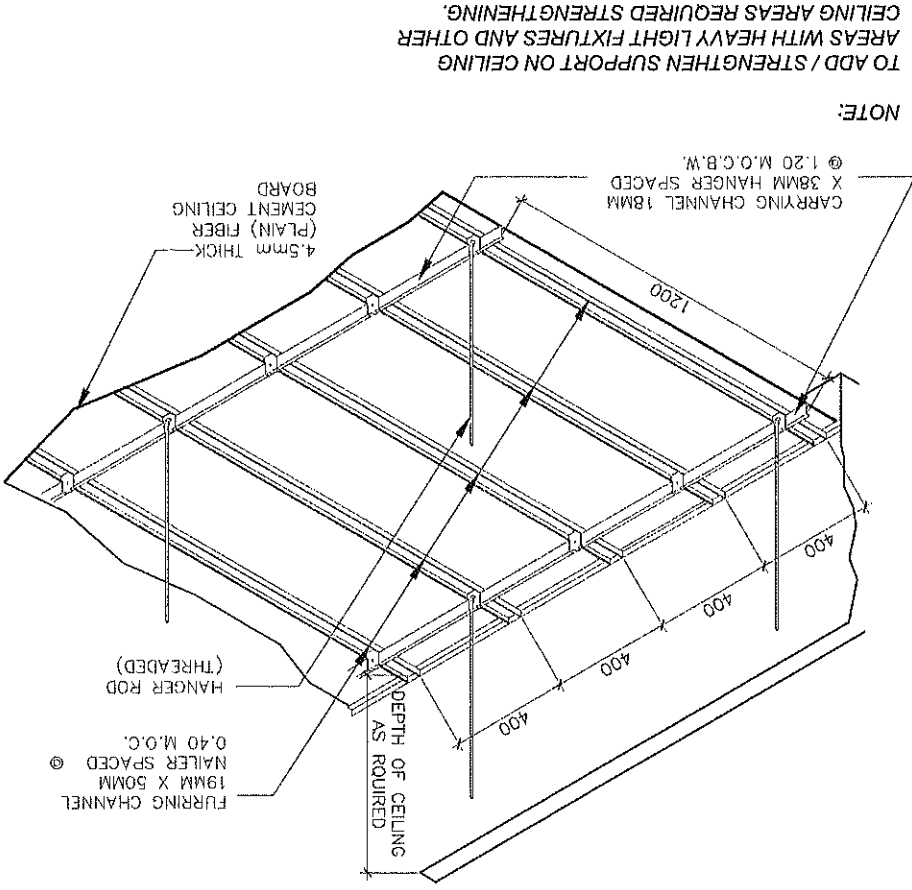
CEILING LAYOUT PLAN

SCALE 1:75 MTS



CEILING DETAIL

SCALE 1:25 MTS



NOTE:
TO ADD / STRENGTHEN SUPPORT ON CEILING
AREAS WITH HEAVY LIGHT FIXTURES AND OTHER
CEILING AREAS REQUIRED STRENGTHENING.



PHYSICAL PLANNING AND DEVELOPMENT OFFICE
ROOM 202 FEM HALL, MARIANO MARCOS STATE UNIVERSITY
City of Balingasag, Misamis Oriental
Telephone: +63 (77) 792-3191

DRAWN BY: DAVE CLARK E. PASCUA
CHECKED AND REVIEWED BY: AIDA V. CABANES
CHIEF, PHYSICAL PLANNING

PROJECT TITLE: REFURBISHMENT OF FACULTY LOUNGE AND GUIDANCE COUNSELOR OFFICE
LOCATION: MYSU CAMPUS, CITY OF BATAO, MISAMIS ORIENTAL

CONFORMED BY: SORIMA R. DEMAMANTE
RECOMMENDING APPROVAL: ROMEO K. DELA CRUZ
DEAN, CASO

APPROVED BY: SHARLEY C. SARUPIS
UNIVERSITY PRESIDENT

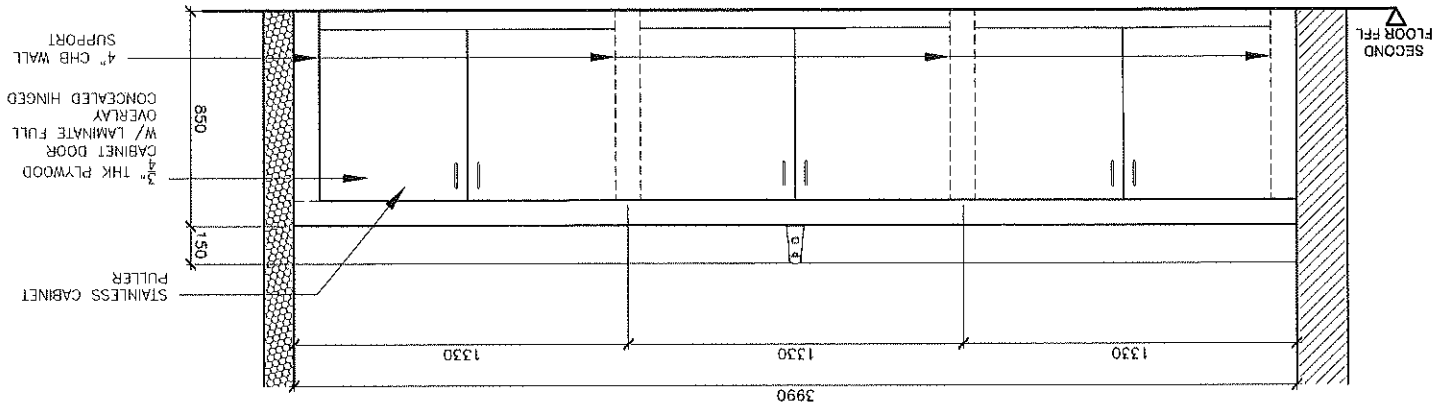
SHEET CONTENTS: AS SHOWN
REVISION AND DATE:



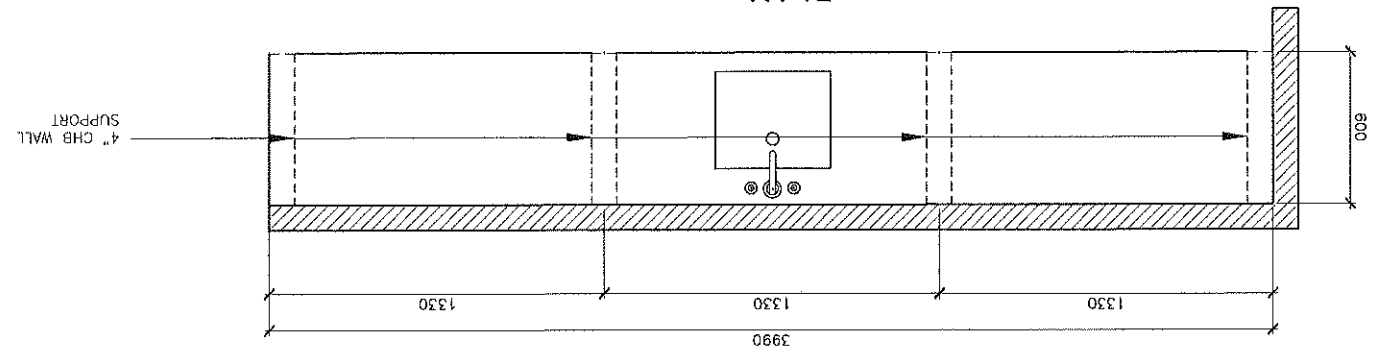
SINK COUNTER WITH CABINET DETAIL

SCALE 1:30 MTS

ELEVATION



PLAN



SECTION DETAIL

SCALE 1:20 MTS

